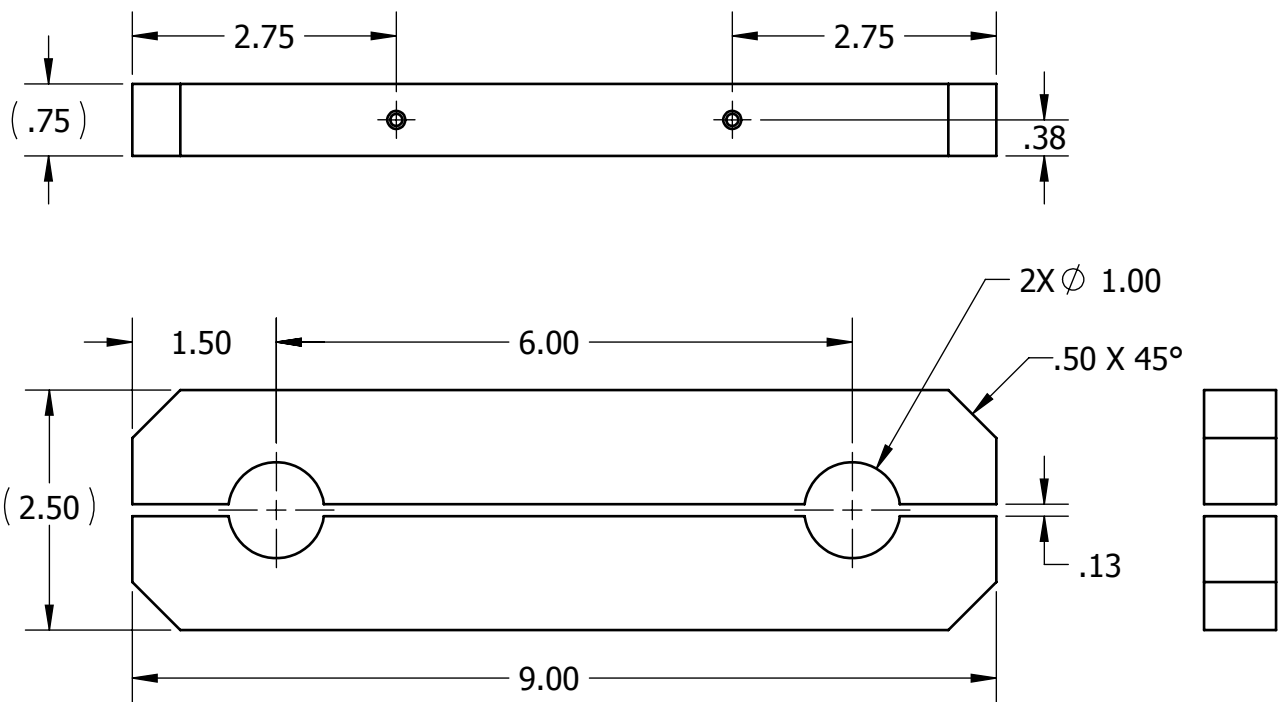
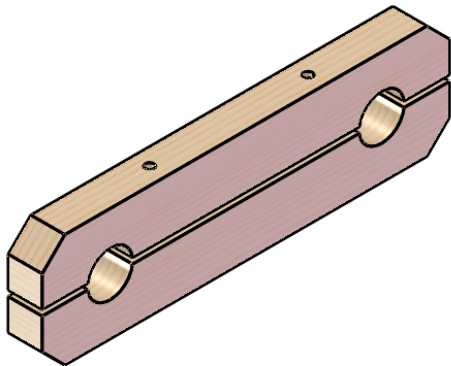


REVISIONS					
REV	EWO/ECO	DESCRIPTION	REVISED	APPROVED	DATE
1	-	RELEASE FOR PRODUCTION	AEA	AEA	3/30/2011



NOTES:

1. MATERIAL: 1 X 3 LUMBER
2. FINISH: AS REQUIRED

UNLESS OTHERWISE SPECIFIED
DIMENSIONS ARE IN INCHES [MILLIMETERS]
TOLERANCES:
ANGLES ± 1°
DECIMALS
1 PLACE ± .06
2 PLACE ± .02
3 PLACE ± .005
4 PLACE ± .0005

THIRD ANGLE PROJECTION

DRAWN TO ASME Y14.5M-1994
BREAK SHARP EDGES .015 MAX
DO NOT SCALE DRAWING

A very Swell Idea, Inc.
KENYON, MN 55946, USA
WWW.AVERYSWELLIDEA.COM
CAD SERVICES
PRODUCT DEVELOPMENT
EDUCATIONAL PROGRAMS

NOTICE: The data in this document incorporates proprietary rights of A very Swell Idea, Inc. Any party accepting this document does so in confidence and agrees that it shall not be duplicated in whole or in part, nor disclosed to others, without the written consent of A very Swell Idea, Inc.

TITLE		CLAMP BLOCK				
D.V. APPROVAL	AEA	DATE	3/30/2011	SIZE	DRAWING NUMBER	REV
DESIGNED BY	AEA	DATE	9/3/2010	A ClampBlock		1
DRAWN BY	AEA	DATE	3/29/2011			
SCALE	1:2	WEIGHT	0.1790	SHEET	1 OF 1	